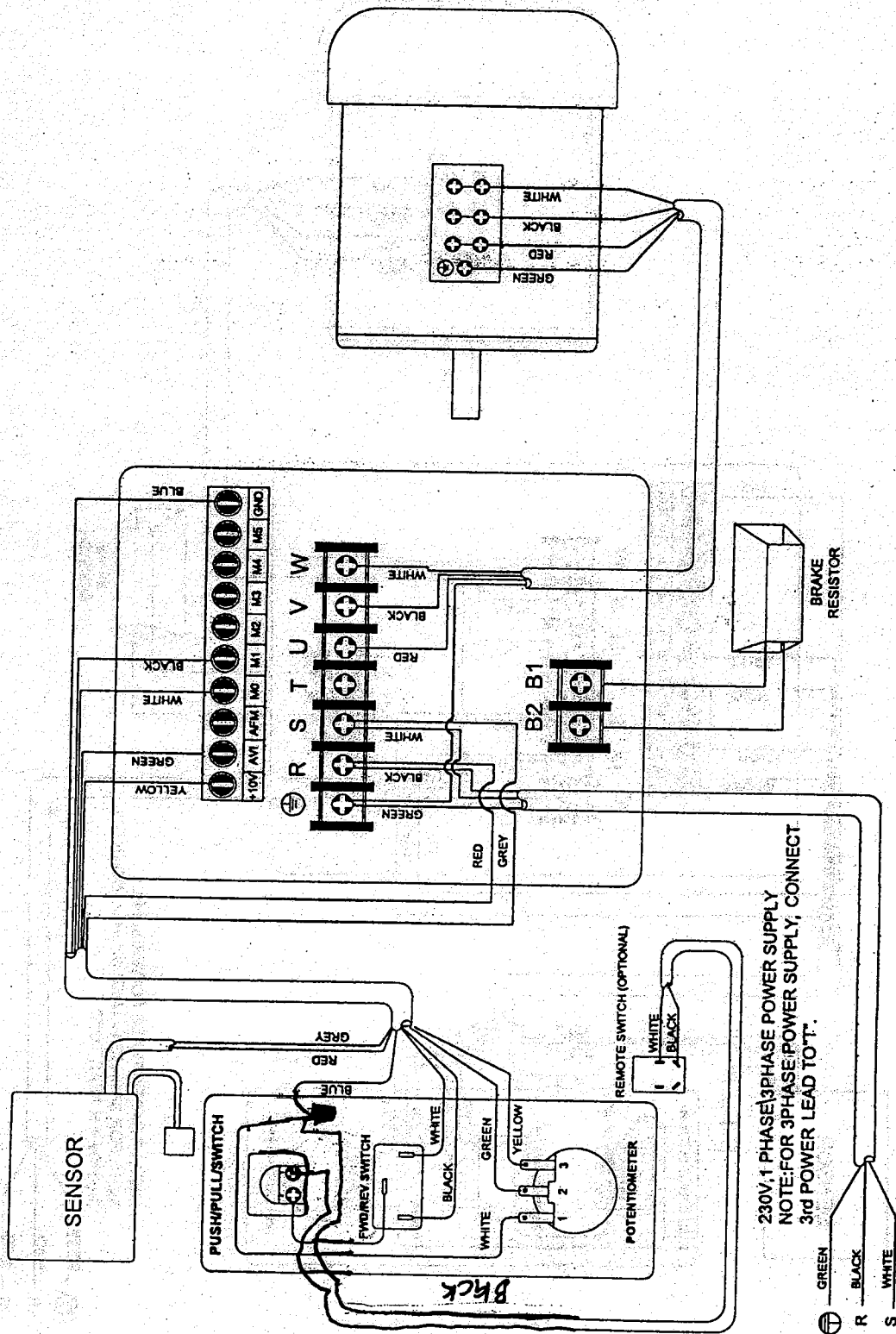


Electrical Connections

3520B Lathe Electrical Connections



1. Disconnect the machine from the power supply.
2. Remove the two screws that secure the panel that contains the switches.
3. Remove the blue and white wire from the back of the Push / Pull switch.
4. Connect the black wire from the remote switch with the blue and white wires you just removed from the push/pull switch. Secure all three wires with a wire nut.
5. Connect the white wire from the remote switch to the back of the push/pull switch where the blue and white wires were connected.
6. Secure the front panel back on the machine.
7. Plug the machine in.

Note, both the remote switch and the push/pull switch need to be in the "On" position in order for the machine to function.